

Magnum® PRO Curve™ Semiautomatic Guns

Processes

MIG, Pulsed MIG, Flux-Cored

Product Number

K2950-x Magnum® PRO Curve™ 200

K2951-x Magnum® PRO Curve™ 300

K2952-x Magnum® PRO Curve™ 400

K3055-x Magnum® PRO Curve™ 400

Short Neck

Amperage Rating @ 60% Duty Cycle

Magnum® PRO Curve™ 200: CO₂: 200A

Magnum® PRO Curve™ 300: CO₂: 300A

Magnum® PRO Curve™ 400: CO₂: 400A

Wire Diameter Range in. (mm)

.025 - 3/64 (0.6 - 1.2)

.025 - 5/64 (0.6 - 2.0)

.025 - 5/64 (0.6 - 2.0)

Cable Length ft. (m)

See Table Below

Semiautomatic Air-Cooled Guns

New Magnum® PRO Curve™ guns for MIG or flux-cored welding combine our classic curved handle with our Copper Plus™ contact tips and Magnum® PRO gun expendables to deliver long hours of fabrication welding with less frequent tip and gun expendable parts changes.

FEATURES

- ▶ **Industrial Grade Construction** -
 - High quality copper parts ensure superior electrical contact and heat dissipation.
 - Four trigger leads are standard for fast field repair.
 - Patent-pending Anti-Seize™ tip and diffuser thread design reduces tip and diffuser seizing.
- ▶ **Lincoln Electric Copper Plus™ Contact Tips** - Larger tip diameter and mass improve heat dissipation to increase tip life.
- ▶ **Curve™ Handle Design** - Our Curve™ handle is lightweight and balanced, providing a comfortable grip to reduce fatigue.
- ▶ **Rotating Gun Tube and Gun Hanger Clip** - Allow any number of hand positions to reduce fatigue or fit into tight spaces.
- ▶ **Simplified Expendable Parts Selection**
 - 350A and 550A consumables are interchangeable across all gun models.
 - All models ship with 350A parts.
- ▶ **Upgrade your Magnum®** - Turn your existing gun into a Magnum® PRO Curve™ by switching to Magnum® PRO gun tubes and expendable parts.



Shown K2951-2

MAGNUM PRO

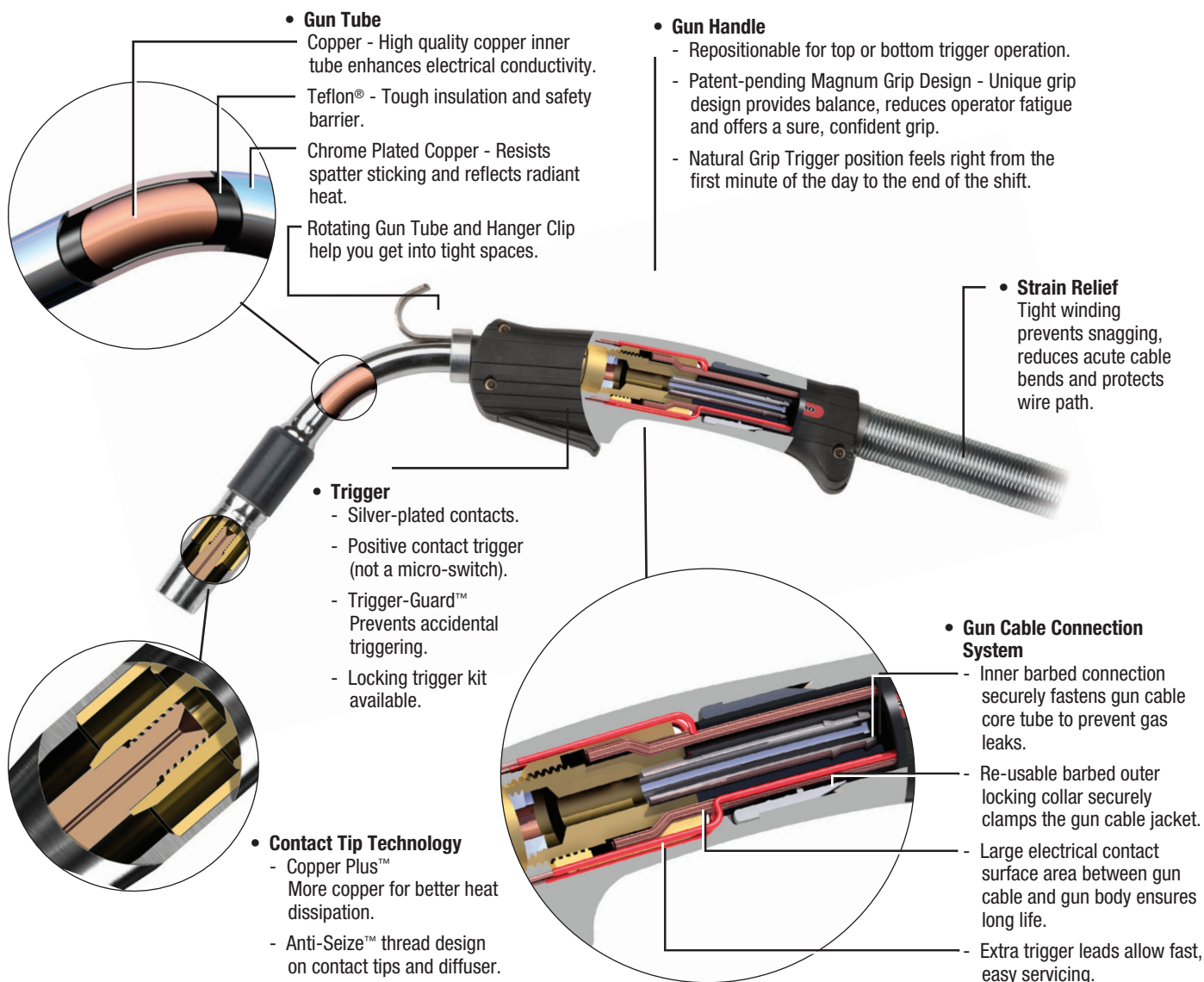
WHAT'S INCLUDED

- ▶ Contact Tip (Qty. 1) (KP2744-045)
- ▶ 0.625 in. (15.9 mm) Thread-On Gas Nozzle with 1/8 in. (3.2 mm) recess (KP2742-1-62R)
- ▶ Thread-On Diffuser (KP2746-1)

APPLICATIONS

- ▶ Shop Production
- ▶ Maintenance and Repair
- ▶ Construction

TOP FEATURES

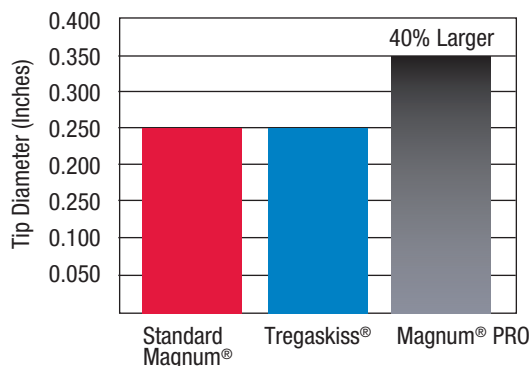


CONTACT TIP TECHNOLOGY

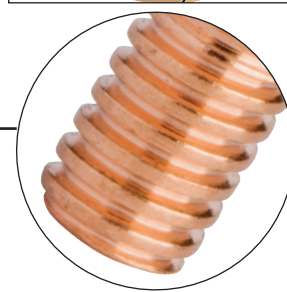
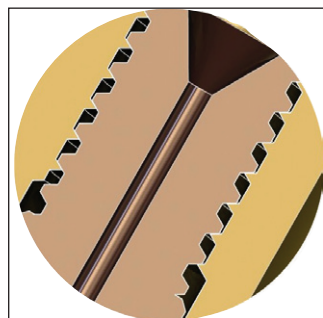
Copper Plus™ Contact Tips

Compare Magnum® PRO tips to Standard Magnum® and Tregaskiss®

Larger Diameter Means More Copper.
The Result? Greater Heat Dissipation and Longer Life.

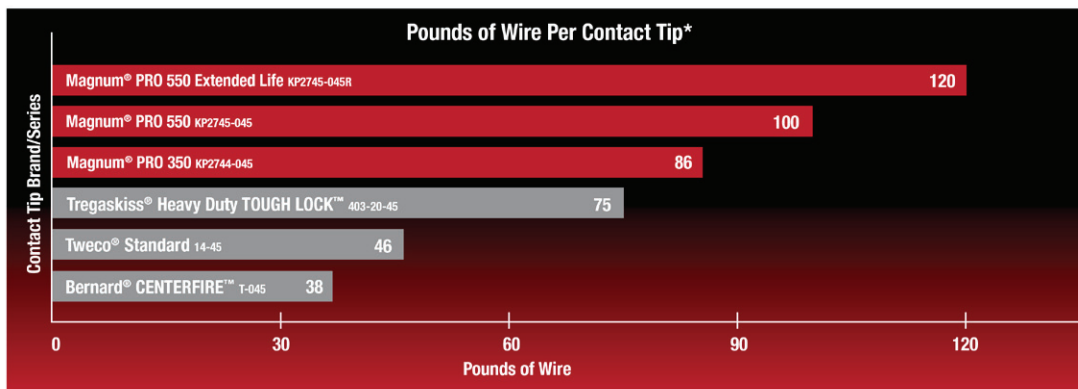


Tregaskiss is a trademark of Tregaskiss, wholly owned subsidiary of Illinois Tool Works.



Patent-pending Anti-Seize™ Thread Design

Flattened thread profile increases the thread cross-section where heat typically concentrates and tips fail. The result is reduced melting, fusion, seizing and extended contact tip service life. Longer life and fewer tip changes reduces expendable part and labor costs while increasing arc time. To extend contact tip life even more, optional chrome-zirconium Extended Life™ tips are also available.



* Results based on the following test parameters: .045 SuperArc® L-56 on 60 lb. spools. Two spools of wire per tip. Pulse program. 350 ipm Wire Feed Speed (approx. 16 welding hours per tip). 100% duty cycle. Contact tip usage values based on replacing tip after 10% wear. Your actual results may vary.

The trademark Tregaskiss® and Tough Lock™ are the property of Tregaskiss, wholly owned subsidiary of Illinois Tool Works Inc. Bernard® and Centerfire™ are trademarks of Illinois Tool Works Inc. The trademark Tweco® is the property of Thermadyne Industries Inc. Actual testing was completed by Lincoln Electric personnel in Cleveland, Ohio in December 2009. Testing results were complete and accurate at the time of publication in September 2010.

EXPENDABLE PARTS

STEP 1 SELECT YOUR GUN CONNECTOR KIT

GUN CONNECTOR KIT		
Manufacturer	Wire Feeder Model	Magnum® PRO 200/300/400
Lincoln Electric®	LN-7 Series, LN-8, LN-9, LN-25 [Up to .052 in. (1.4 mm) Wire]	K466-1
	LN-8, LN-9 Series, LN-25 [1/16 in. (1.6 mm) and Larger Wire]	K466-8
	LF-72, LF-74 Series, LN-25 PRO	K466-10
	Power Feed™ 10 and 25 series	K466-10
	POWER MIG® Series and Power Wave® C300	K466-6
Tweco® Adapted	No. 2, No. 3, No. 4 Guns (K466), No. 5 (K613)	K466-2
Miller®	Intellimatic, Sidekick, D-51A, Porto-Mig Millermatic 130, 200, MM-35, S-42GL, S-52A, S-54A, Swing Arc-Dual, Swing Arc-Single S-32S, 52D, 54D, 54E, 60 Series	K466-3



K466-10

STEP 2 SELECT YOUR LINER

MAGNUM® PRO CURVE™ 200A in. (mm)				
ft. (m)	.025-.030 (0.6-0.8)	.030-.035 (0.8-0.9)	.035-.045 (0.9-1.2)	Aluminum ⁽¹⁾ .035-3/64 (0.9-1.2)
15 (4.5)	KP42-25-15	KP42-3035-15	KP42-4045-15	KP44N-3545-15 ⁽¹⁾

(1) Recommended for aluminum wire welding.

MAGNUM® PRO CURVE™ 300A/400A in. (mm)				
ft. (m)	.035-.045 (0.9-1.2)	.052-1/16 (1.3-1.6)	1/16-5/64 (1.6-2.0)	Aluminum ⁽¹⁾ .035-3/64 (0.9-1.2)
15 (4.5)	KP44-3545-15	KP44-116-15	KP44-564-15	KP44N-3545-15 ⁽¹⁾
26 (7.6)	KP44-3545-25	KP44-116-25	KP44-564-25	—

EXPENDABLE PARTS CONTINUED

350 A and 550 A Magnum® PRO Expendable Parts are interchangeable. Interchanging will require gun tube insulator and gas diffuser changes. Customers may choose to change expendable parts to standardize stocking parts or to make the gun more compact for tight spaces.

Magnum® PRO 350 A Expendables



Contact Tip for up to 350 A

CONTACT TIPS 350 A				
Wire Diameter in. (mm)	Standard	Standard	Tapered Tip	Tapered Tip
	Pkg. Qty. - 10	Pkg. Qty. - 100	Pkg. Qty. - 10	Pkg. Qty. - 100
0.025 (0.6)	KP2744-025	KP2744-025-B100	KP2744-025T	KP2744-025T-B100
0.030 (0.8)	KP2744-030	KP2744-030-B100	KP2744-030T	KP2744-030T-B100
0.035 (0.9)	KP2744-035	KP2744-035-B100	KP2744-035T	KP2744-035T-B100
0.040 (1.0)	KP2744-040	KP2744-040-B100	KP2744-040T	KP2744-040T-B100
0.045 (1.2)	KP2744-045	KP2744-045-B100	KP2744-045T	KP2744-045T-B100
0.052 (1.3)	KP2744-052	KP2744-052-B100	KP2744-052T	KP2744-052T-B100
1/16 (1.6)	KP2744-116	KP2744-116-B100	KP2744-116T	KP2744-116T-B100
5/64 (2.0)	KP2744-564	KP2744-564-B100	KP2744-564T	KP2744-564T-B100

GAS DIFFUSER 350 A			
Type			
Pkg. Qty.	Thread-on Standard Duty	Thread-on Light Duty	Slip-on
1	KP2746-1	KP3141-1 ⁽¹⁾	KP2746-2
25	KP2746-1-B25	KP3141-1-B25 ⁽¹⁾	KP2746-2-B25



Gas Diffuser for up to 350 A Thread-on



Gas Diffuser for up to 350 A Slip-on

GUN TUBE INSULATOR 350 A	
Pkg. Qty.	Part Number
1	KP2773-2
25	KP2773-2-B25



Gun Tube Insulator 350 A

GAS NOZZLE 350 A						
Gas Nozzle Diameter in. (mm)						
	Nozzle	Pkg. Qty.	Standard 0.375 (9.5)	Standard 0.5 (12.7)	Bottleneck 0.5 (12.7)	Standard 0.625 (15.9)
Thread-on	1/8 (3.2) Recess	1	KP2742-1-38R	KP2742-1-50R	KP3160-1-50R	KP2742-1-62R
		25	KP2742-1-38R-B25	KP2742-1-50R-B25	KP3160-1-50R-B25	KP2742-1-62R-B25
	Flush	1	KP2742-1-38F	KP2742-1-50F	KP3160-1-50F	KP2742-1-62F
		25	KP2742-1-38F-B25	KP2742-1-50F-B25	KP3160-1-50F-B25	KP2742-1-62F-B25
	1/8 (3.2) Stickout	1	KP2742-1-38S	KP2742-1-50S	KP3160-1-50S	KP2742-1-62S
		25	KP2742-1-38S-B25	KP2742-1-50S-B25	KP3160-1-50S-B25	KP2742-1-62S-B25
Slip-on	1/8 (3.2) Recess	1	—	KP2742-2-50R	—	KP2742-2-62R
		25	—	KP2742-2-50R-B25	—	KP2742-2-62R-B25
	Flush	1	—	KP2742-2-50F	—	KP2742-2-62F
		25	—	KP2742-2-50F-B25	—	KP2742-2-62F-B25
	1/8 (3.2) Stickout	1	—	KP2742-2-50S	—	KP2742-2-62S
		25	—	KP2742-2-50S-B25	—	KP2742-2-62S-B25



Bottleneck Gas Nozzle for up to 350 A Thread-on 1/8 in. (3.2 mm) Recessed



Gas Nozzle for up to 350 A Thread-on 1/8 in. (3.2 mm) Recessed

GUN TUBE ⁽²⁾				
Gun Tubes	45°	60°	82°	Flexible
Magnum® PRO Curve™ 200	KP2924-45	KP2924-60	—	—
Magnum® PRO Curve™ 300	KP2925-45	KP2925-60	—	—
Magnum® PRO Curve™ 400	KP2926-45	KP2926-60	KP2926-82	KP3200-1

(1) For use with Magnum® PRO 100L KP3075-1-XXX nozzles only

(2) Can be used on existing Magnum® Guns

EXPENDABLE PARTS CONTINUED

350 A and 550 A Magnum® PRO Expendable Parts are interchangeable. Interchanging will require gun tube insulator and gas diffuser changes. Customers may choose to change expendable parts to standardize stocking parts or to make the gun more compact for tight spaces.

Magnum® PRO 550 A Expendables



Contact Tip for up to 550 A

CONTACT TIPS 550 A				
Wire Diameter in. (mm)	Standard	Standard	Extended Life	Extended Life
	Pkg. Qty. - 10	Pkg. Qty. - 100	Pkg. Qty. - 10	Pkg. Qty. - 100
0.035 (0.9)	KP2745-035	KP2745-035-B100	KP2745-035R	KP2745-035R-B100
0.040 (1.0)	KP2745-040	KP2745-040-B100	NA	NA
0.045 (1.2)	KP2745-045	KP2745-045-B100	KP2745-045R	KP2745-045R-B100
0.052 (1.3)	KP2745-052	KP2745-052-B100	KP2745-052R	KP2745-052R-B100
1/16 (1.6)	KP2745-116	KP2745-116-B100	KP2745-116R	KP2745-116R-B100
0.068-0.072 (1.7-1.8)	KP2745-072	KP2745-072-B100	KP2745-072R	KP2745-072R-B100
5/64 (2.0)	KP2745-564	KP2745-564-B100	KP2745-564R	KP2745-564R-B100
3/32 (2.4) ⁽¹⁾	KP2745-332	KP2745-332-B100	KP2745-332R	KP2745-332R-B100
7/64 (2.8) ⁽¹⁾	KP2745-764	KP2745-764-B100	KP2745-764R	KP2745-764R-B100
1/8 (3.2) ⁽¹⁾	KP2745-18	KP2745-18-B100	NA	NA

(1) 550 only

GAS DIFFUSER 550 A			
Type			
Pkg. Qty.	Thread-on Standard Duty	Thread-on 1/4 in. Recess	Slip-on
1	KP2747-1	KP3155-1	KP2747-2
25	KP2747-1-B25	KP3155-1-B25	KP2747-2-B25



Gas Diffuser for up to 550 A Thread-on



Gas Diffuser for up to 550 A Slip-on

GUN TUBE INSULATOR 550 A	
Pkg. Qty.	Part Number
1	KP2773-1
25	KP2773-1-B25



Gun Tube Insulator 550 A

GAS NOZZLE 550 A					
Gas Nozzle Diameter in. (mm)					
Thread-on	Nozzle	Pkg. Qty.	Standard 0.625 (15.9)	Bottleneck 0.625 (15.9)	Standard 0.750 (19)
	1/8 (3.2)	1	KP2743-1-62R	KP3161-1-62R	KP2743-1-75R
	Recess	25	KP2743-1-62R-B25	KP3161-1-62R-B25	KP2743-1-75R-B25
	Flush	1	KP2743-1-62F	KP3161-1-62F	KP2743-1-75F
		25	KP2743-1-62F-B25	KP3161-1-62F-B25	KP2743-1-75F-B25
	1/8 (3.2)	1	KP2743-1-62S	KP3161-1-62S	KP2743-1-75S
Slip-on	Stickout	25	KP2743-1-62S-B25	KP3161-1-62S-B25	KP2743-1-75S-B25
	1/8 (3.2)	1	KP2743-2-62R	—	KP2743-2-75R
	Recess	25	KP2743-2-62R-B25	—	KP2743-2-75R-B25
	Flush	1	KP2743-2-62F	—	KP2743-2-75F
		25	KP2743-2-62F-B25	—	KP2743-2-75F-B25
	1/8 (3.2)	1	KP2743-2-62S	—	KP2743-2-75S
	Stickout	25	KP2743-2-62S-B25	—	KP2743-2-75S-B25



Bottleneck Gas Nozzle for 550 Thread-on 1/8 in. (3.2 mm) Recessed



Gas Nozzle for 550 Thread-on 1/8 in. (3.2 mm) Recessed

RECOMMENDED ACCESSORIES



GENERAL OPTIONS

Magnum® PRO Harness Adapter
Required for use with
Magnum® PRO Dual Procedure
or Dual Schedule guns when
adapting to POWER MIG® products,
Power Wave® C300, or
Miller Electric® wire feeders.
Order K3159-1

SPECIFICATIONS

Product Name	Product Number	Amperage Rating 60% Duty Cycle		Wire Diameter Range in.	Wire Diameter Range (mm)	Cable Length ft. (m)	Gun Connector	Gun Liner
		CO ₂	Mixed					
Magnum® PRO Curve™ 200	K2950-1	200	150	.025 - 3/64	(0.6 - 1.2)	10 (3.0)	Order Separately	Order Separately
	K2950-2					15 (4.5)		
Magnum® PRO Curve™ 300	K2951-1	300	200	.025 - 5/64	(0.6 - 2.0)	10 (3.0)		
	K2951-2					15 (4.5)		
	K2951-3					20 (6.1)		
	K2951-4					25 (7.6)		
Magnum® PRO Curve™ 300 Dual Procedure	K3130-1	300	200	.025 - 5/64	(0.6 - 2.0)	10 (3.0)		
	K3130-2					15 (4.5)		
	K3130-3					20 (6.1)		
	K3130-4					25 (7.6)		
Magnum® PRO Curve™ 300 Dual Schedule	K3092-1	300	200	.025 - 5/64	(0.6 - 2.0)	10 (3.0)		
	K3092-2					15 (4.5)		
	K3092-3					20 (6.1)		
	K3092-4					25 (7.6)		
Magnum® PRO Curve™ 400	K2952-1	400	400 @ 50% DC	.025 - 5/64	(0.6 - 2.0)	10 (3.0)		
	K2952-2					15 (4.5)		
	K2952-3					20 (6.1)		
	K2952-4					25 (7.6)		
Magnum® PRO Curve™ 400 Dual Procedure	K3098-1	400	400 @ 50% DC	.025 - 5/64	(0.6 - 2.0)	10 (3.0)		
	K3098-2					15 (4.5)		
	K3098-3					20 (6.1)		
	K3098-4					25 (7.6)		
Magnum® PRO Curve™ 400 Dual Schedule	K3093-1	400	400 @ 50% DC	.025 - 5/64	(0.6 - 2.0)	10 (3.0)		
	K3093-2					15 (4.5)		
	K3093-3					20 (6.1)		
	K3093-4					25 (7.6)		
Magnum® PRO Curve™ 400A Short Neck	K3055-1	400	400 @ 50% DC	.025 - 5/64	(0.6 - 2.0)	10 (3.0)		
	K3055-2					15 (4.5)		
	K3055-3					20 (6.1)		
	K3055-4					25 (7.6)		
Magnum® PRO Curve™ 200 Ready-Pak®	K2950-2-10-45	200	150	.025 - 3/64*	(0.6 - 1.2)	15 (4.5)	K466-10	KP42-4045-15
Magnum® PRO Curve™ 300 Ready-Pak®	K2951-2-6-45	300	200	.025 - 5/64*	(0.6 - 2.0)	15 (4.5)	K466-6	KP44-3545-15
Magnum® PRO Curve™ 300 Ready-Pak®	K2951-2-10-45	300	200	.025 - 5/64*	(0.6 - 2.0)	15 (4.5)	K466-10	KP44-3545-15
Magnum® PRO Curve™ 400 Ready-Pak®	K2952-2-10-45	400	400 @ 50% DC	.025 - 5/64*	(0.6 - 2.0)	15 (4.5)	K466-10	KP44-3545-15

* Ready-Paks® come with .035-.045 liner

CUSTOMER ASSISTANCE POLICY

The business of The Lincoln Electric Company is manufacturing and selling high quality welding equipment, consumables, and cutting equipment. Our challenge is to meet the needs of our customers and to exceed their expectations. On occasion, purchasers may ask Lincoln Electric for information or advice about their use of our products. Our employees respond to inquiries to the best of their ability based on information provided to them by the customers and the knowledge they may have concerning the application. Our employees, however, are not in a position to verify the information provided or to evaluate the engineering requirements for the particular weldment. Accordingly, Lincoln Electric does not warrant or guarantee or assume any liability with respect to such information or advice. Moreover, the provision of such information or advice does not create, expand, or alter any warranty on our products. Any express or implied warranty that might arise from the information or advice, including any implied warranty of merchantability or any warranty of fitness for any customers' particular purpose is specifically disclaimed.

Lincoln Electric is a responsive manufacturer, but the selection and use of specific products sold by Lincoln Electric is solely within the control of, and remains the sole responsibility of the customer. Many variables beyond the control of Lincoln Electric affect the results obtained in applying these types of fabrication methods and service requirements.

Subject to Change – This information is accurate to the best of our knowledge at the time of printing. Please refer to www.lincolnelectric.com for any updated information.

LINCOLN®
ELECTRIC
THE WELDING EXPERTS®