

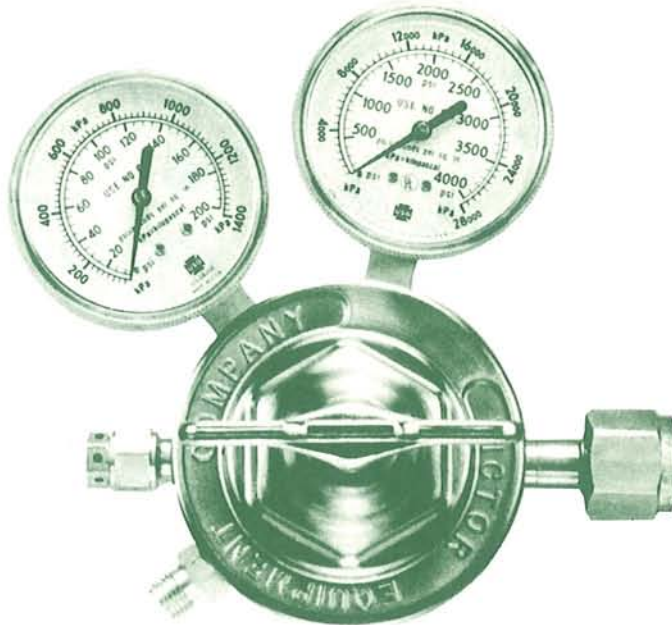


SR 450 SERIES REGULATORS

PARTS AND SERVICE BULLETIN

FORM NO. 56-610

EFFECTIVE 5-87



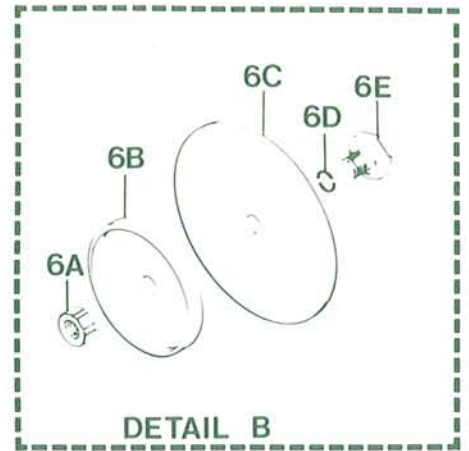
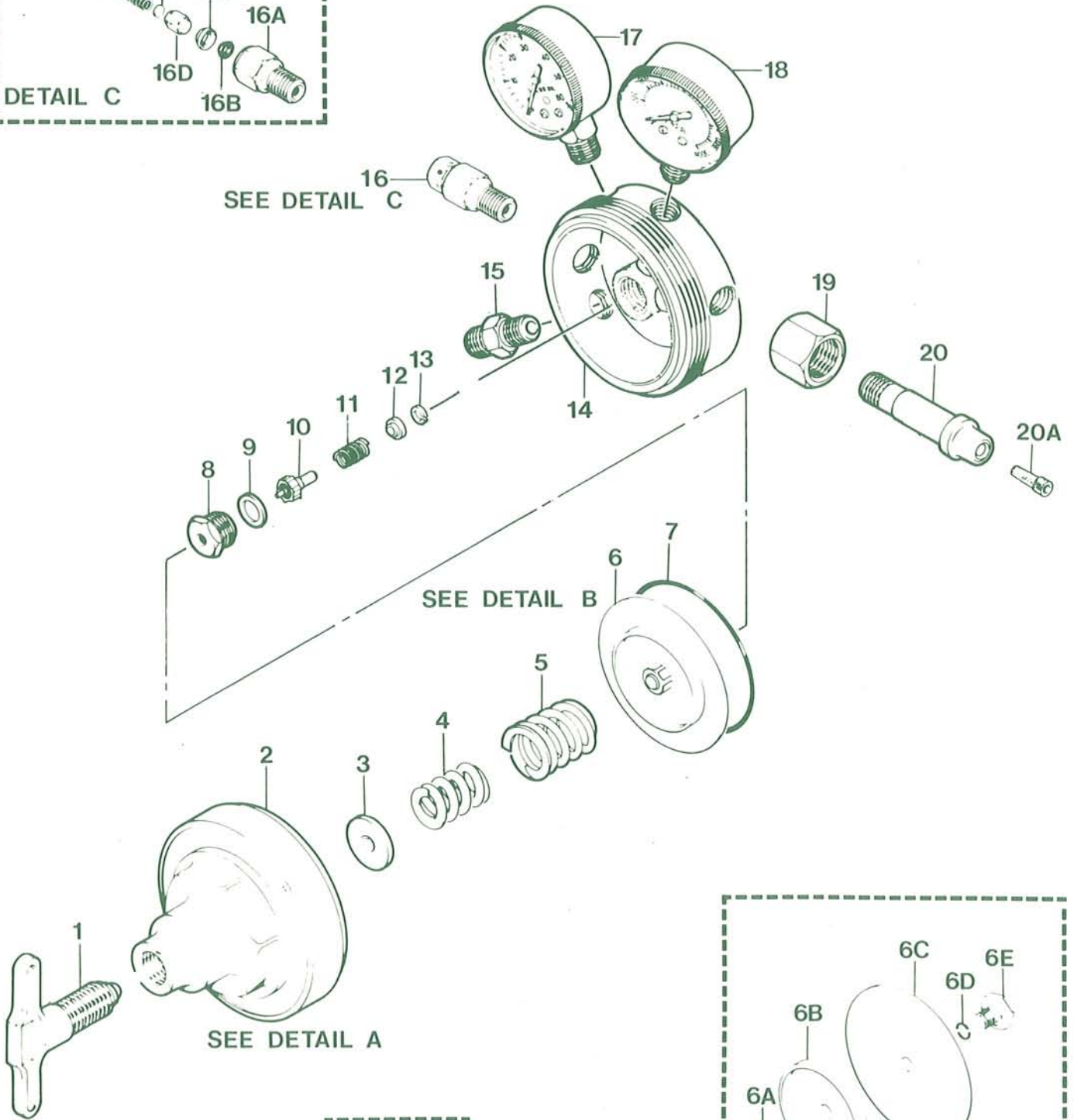
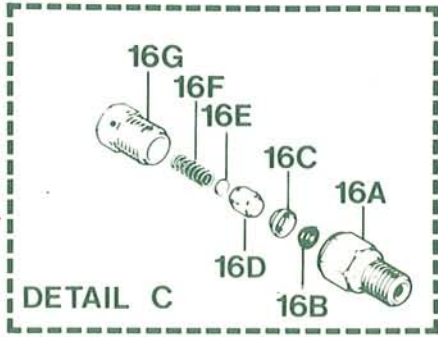
MODEL INFORMATION

Gas Service	CGA Inlet	A Range 2-15 PSIG	B Range 2-40 PSIG	D Range 5-125 PSIG	E Range 10-200 PSIG
Oxygen	540	SR 450A	SR 450B	SR 450D	SR 450E
Argon/Helium/Nitrogen	580	SR 450A	SR 450B	SR 450D	SR 450F
Air (Ind)/Nitrogen	590			SR 450D	
Air (Human Resp)	346			SR 450D	SR 450E
Hydrogen	350	SR 452A		SR 452D	SR 452E
Carbon Dioxide	320			SR 453D	SR 453E
Acetylene	300	SR 460A			
Acetylene	510	SR 460A			
Propane/MAPP	510		SR 461B	SR 461D	

WARNING

Apparatus improperly operated, maintained or repaired can be dangerous. Some parts and accessories, manufactured by others may fit VICTOR apparatus but not conform to VICTOR's exacting standards. For your own protection, specify and use only VICTOR-made parts and accessories.

Service and repair of VICTOR apparatus should be performed only by a qualified technician. Improper service or repair, or modification of the product could result in damage to the product or injury to the operator.



PARTS LIST

REF. NO.	DESCRIPTION	SR 450, M	SR 460, M
		SR 452, M SR 453, M	SR 461, M
1	Adjusting Screw	0750-0007	0750-0007
2	Housing Cap w/Bushing	See Chart I	See Chart I
+ 2A	Cap Bushing	0722-0003	0722-0003
3	Spring Button	0706-0005	0706-0019
4	Adjusting Spring (Inner)	See Chart I	None
5	Adjusting Spring (Outer)	See Chart I	See Chart I
6	Diaphragm Assembly	0730-0030	0730-0030
6A	Diaphragm Nut	0743-0037	0743-0037
6B	Diaphragm Plate	0735-0016	0735-0016
6C	Diaphragm	0731-0016	0731-0016
+ 6D	O-Ring	1407-0008	1407-0008
6E	Centralizer	0733-0041	0733-0041
+ 7	Diaphragm O-Ring	1407-0187	1407-0187
8	Nozzle	0702-0054	0702-0054
+ 9	Nozzle Gasket	1408-0086	1408-0086
+ 10	Seat Assembly*	See Chart III	See Chart III
11	Valve Spring	0762-0006	0762-0006
12	Gland	0708-0003	0708-0003
+ 13	Friction Bushing	1408-0033	1408-0033
14	Body	0701-0202	0701-0203
+ 15	Outlet Connection	See Chart III	See Chart III
16	Relief Valve	See Chart II	None
+ 17	Gauge, L. P.	See Chart I	See Chart I
+ 18	Gauge, H. P.	See Chart I	See Chart I
+ 19	Inlet Nut	See Chart III	See Chart III
+ 20	Inlet Swivel w/Filter	See Chart III	See Chart III
20A	Filter	0717-0003**	0717-0003**

**Cylinder Models Only

CHART I

ADJUSTING SPRING & GAUGE INFORMATION

REF. NO.	DESCRIPTION	SR 450A	SR 450B	SR 450D, MD	SR 450E, ME	SR 460A, MA	SR 461B, MB	SR 461D, MD
		SR 452A	SR 452B	SR 452D, MD	SR 452E, ME			
		SR 453A	SR 453B	SR 453D, MD	SR 453E, ME			
2	Housing Cap	0720-0043	0720-0043	0720-0043	0720-0052	0720-0043	0720-0043	0720-0043
4	Adj. Spring (Inner)	None	None	None	0761-0085	None	None	None
5	Adj. Spring (Outer)	0761-0002	0761-0005	0761-0006	0761-0086	0761-0004	0761-0005	0761-0006
17	Gauge, L.P.	1424-0029	1424-0035	1424-0039	1424-0046	1424-0034	1424-0035	1424-0039
18	Gauge, H.P.	1424-0057	1424-0057	1424-0057	1424-0057	1424-0046	1424-0046	1424-0046

CHART II

SAFETY VALVE INFORMATION

REF. NO.	DESCRIPTION	SR 450A	SR 450B	SR 450D, MD	SR 450E, ME	SR 452A	SR 452B	SR 452D, MD	SR 452E, ME
		SR 453A	SR 453B	SR 453D, MD	SR 453E, ME				
16	Relief Valve	0600-0003	0600-0005	0600-0014	0600-0018	0600-0065	0600-0060	0600-0066	0600-0071
16A	Body	0601-0004	0601-0004	0601-0004	0601-0006	0601-0006	0601-0006	0601-0006	0601-0006
+ 16B	Seat	0608-0006	0608-0006	0608-0006	0608-0009	0608-0006	0608-0006	0608-0006	0608-0009
16C	Seat Retainer	0609-0003	0609-0003	0609-0003	0609-0006	0609-0006	0609-0006	0609-0006	0609-0006
16D	Upper Seat	0608-0018	0608-0018	0608-0018	0608-0023	0608-0023	0608-0023	0608-0023	0608-0023
16E	Disc	1406-0016	1406-0016	1406-0016	1406-0017	1406-0017	1406-0017	1406-0017	1406-0017
16F	Spring	0610-0004	0610-0005	0610-0008	0610-0013	0610-0017	0610-0016	0610-0016	0610-0014
16G	Cap	0614-0004	0614-0004	0614-0004	0614-0006	0614-0016	0614-0016	0614-0016	0614-0016
not/shown	Spring Button	None	None	None	None	0606-0005	0606-0005	0606-0005	0606-0005
not/shown	Adj. Screw	None	None	None	None	1401-0007	1401-0008	1401-0008	1401-0008
not/shown	Cap Nut	None	None	None	None	1403-0024	1403-0024	1403-0024	1403-0024

+ ITEMS MOST COMMONLY REQUIRED FOR REGULATOR REPAIR AND RECOMMENDED FOR STOCK

CHART III
INLET NUT & SWIVEL AND SEAT ASSEMBLY INFORMATION

GAS	CGA INLET NO.	SWIVEL ** PART NO.	NUT ** PART NO.	OUTLET PART NO.	SEAT ASSEMBLY PART NO.
Oxygen	540	0967-0033	0967-0044	0950-0068	0740-0131
Argon/Helium/Nitrogen	580	0970-0005	0973-0003	0950-0017	0740-0131
Air (Industrial)/Nitrogen	590	0970-0005	0974-0003	0960-0014	0740-0131
Air (Human Resp.)	346	0972-0010	0972-0015	0950-0068	0740-0131
Hydrogen	350	0983-0005	0983-0003	0960-0029	0740-0131
Carbon Dioxide	320 *	0985-0004	0985-0030	0950-0068	0740-0131
Nitrous Oxide	326	0963-0010	0963-0015	0950-0080	0740-0131
Acetylene	510	0970-0005	0970-0003	0960-0029	0740-0101
Acetylene	300	0968-0005	0968-0003	0960-0029	0740-0101
Propane, Butane, Mapp® Etc.	510	0970-0005	0970-0003	0960-0029	0740-0101

* Inlet Washer P/N 1408-0065 required for use with CGA 320 Inlet Connection.

** Regulators for Manifold Service use Outlet Swivel number 0996-0022, Outlet Nut 0996-0004, and Inlet Bushing Adaptor 0996-0021 R.H. or 0997-0021 (L.H.).

SERVICE NOTES

1. Use Loctite # 222 sealant on low pressure gauge, outlet connection, and relief valve.
2. Use Teflon tape to seal inlet connection and high pressure gauge.
3. Use Fluorolube to lubricate "O" rings.
4. Use 50 foot pounds of torque to tighten housing cap.
5. To clean inlet filter, blow-out filter in reverse direction to normal gas flow.

U.S. Customer Care: 800-426-1888 / FAX 800-535-0557 • International Customer Care: 905-827-9777 / FAX 905-827-9797
U.S. Automation Customer Care: 866-279-2628 / FAX 316-941-4491 • www.victorequip.com



Home of the Brands You Trust™

THE AMERICAS

Denton, TX USA
U.S. Customer Care
Ph: (1) 800-426-1888
Fax: (1) 800-535-0557

Miami, FL USA
Sales Office, Latin America
Ph: (1) 954-727-8371
Fax: (1) 954-727-8376

Oakville, Ontario, Canada
International Customer Care
Ph: (1) 905-827-9777
Fax: (1) 905-827-9797

Rio de Janeiro, Brazil
Customer Care
Ph: (55) 21-2485-8998
Fax: (55) 21-2485-8866

EUROPE

Chorley, United Kingdom
Customer Care
Ph: (44) 1257-261755
Fax: (44) 1257-224800

Milan, Italy
Sales Office
Ph: (39) 02-98-80320
Fax: (39) 02-98-281773

ASIA/PACIFIC

Cikarang, Indonesia
Customer Care
Ph: 62 21+ 8983-0011 / 0012
Fax: 62 21+ 893-6067

Osaka, Japan
Sales Office
Ph: 816-4809-8411
Fax: 816-4809-8412

Melbourne, Australia
Customer Care:
Ph: 1300-654-674
Fax: 613+ 9474-7391

International:
Ph: 613+ 9474-7508
Fax: 613+ 9474-7488

Rawang, Malaysia
Customer Care
Ph: 603+ 6092-2988
Fax: 603+ 6092-1085

Shanghai, China
Sales Office
Ph: 86 21+ 6280-1273
Fax: 86 21+ 3226-0955

Singapore
Sales Office
Ph: 65+ 6832-8066
Fax: 65+ 6763-5812